

Economic Development, Transport and Tourism Scrutiny Commission

Overview Presentation

25th June 2025

Andrew Smith – Director Planning, Development and
Transportation

Peter Chandler – Director Tourism, Culture and Economy

Scope

- Highways and Transportation
- Planning Local Plan/non regulatory
- Regeneration and development projects
- Environment/Climate Emergency
- Place marketing and inward investment
- City centre and tourism development
- Workspace
- Jobs and skills
- Business support
- Leicester and Leicestershire Business & Skills Partnership
- Adult Education

Transport Strategy and Programmes

Lead: Daniel Pearman

- Transport Strategy
- Passenger Transport
- Major Projects
- Connecting Leicester
- Walking and Cycling
- Neighbourhood Projects
- Traffic Regulation orders
- Highways Development Control
- Electric Vehicles/charging



Transport Strategy and Programmes

Active and Sustainable Transport

- Leicester Bus Partnership
- City Bus Stations
- Walking, wheeling, cycling – infrastructure and behaviour change
- Air quality monitoring and action plan



Transport Strategy and Programmes

Capital Projects

- Transforming Cities Fund
- Connecting Leicester
- Active Travel Fund
- Levelling Up
- Local Transport Grant



Transport Strategy and Programmes

Road Safety, Traffic Management, and Speed Control

- 20mph schemes
- Traffic Regulation Orders
- Reactive safety schemes



Highways Activities

Lead: Martin Fletcher

Priorities:

- Highway Maintenance
- Winter Service, Flooding & Drainage
- Network Management
- Parking & Traffic Regulation



Highways & Transport Programmes

Priorities:

- Local Environmental Works
- School Run Parking
- Residents Parking Zones
- Pedestrian Crossings
- Local Traffic Management Schemes

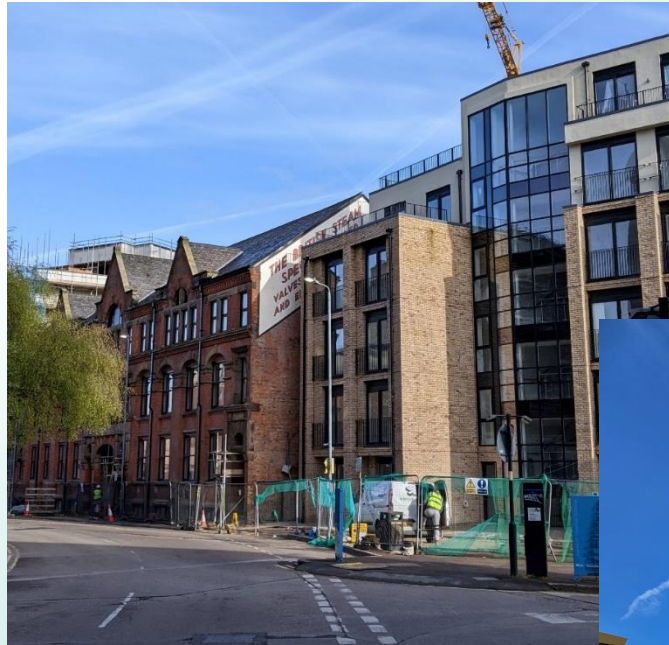


Planning

Lead: Grant Butterworth

Service Priorities

- Local Plan
- Strategic Planning
- Development Management/Planning applications
- Urban Design
- Planning Enforcement
- Mapping system

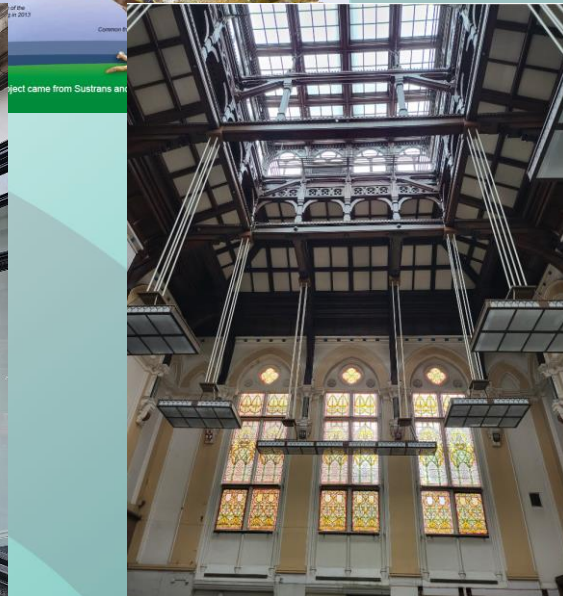
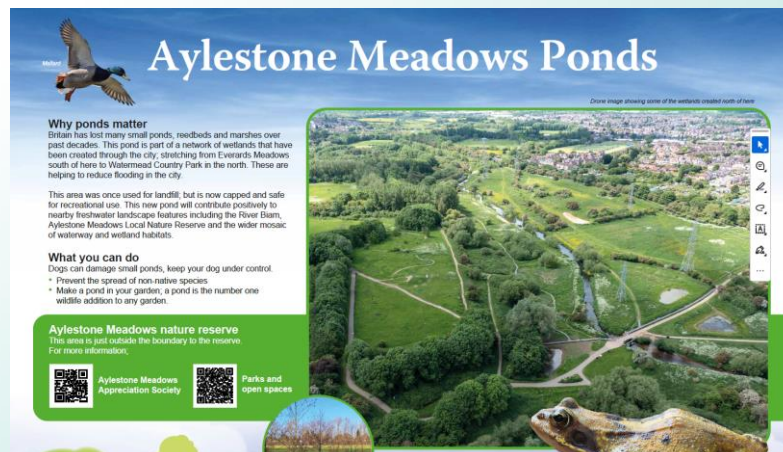


Planning

Lead: Grant Butterworth

Service Priorities:

- **Nature conservation:**
 - Deliver Biodiversity Action Plan
 - Biodiversity Net Gain
 - Sustainable Urban Drainage
 - Landscape design
- **Built Conservation:**
 - Deliver Heritage Action Plan
 - Buildings at Risk
 - Conservation Areas
 - Conservation Grants
 - Heritage Action Zone



Regeneration and Development

Lead: Lauren Tyrrell

Waterside

Priorities

- Continue delivery of residential and employment through lead developer
- Support private sector led schemes



Levelling Up Projects

- Pioneer Park
- Former Ian Marlow Centre
- Railway Station



Ashton Green

Priorities:

- Continue to progress major urban extension
- Secure developers for phased residential development including village centre parcel
- Delivery of new highway and green infrastructure

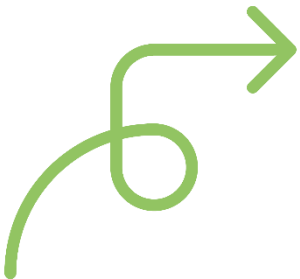


Climate Ready Leicester is
our response to the climate
emergency.

Climate ready means....



1. Towards a net zero city – saving energy, electrification, renewables
2. Also, reducing carbon emissions from Leicester's consumption and waste
3. Becoming resilient and adapted to a changing climate – addressing flooding, heatwaves, water scarcity, climate pressures on biodiversity
4. Thriving individuals, communities and economy through action on climate
5. Council leading by example



Roles:

- Sustainability Team in EBS – leads on policy and strategy, co-ordination, action plan development, monitoring and reporting
- Whole council – development and delivery of actions



Supporting and inspiring action by the public and business, with the help of Climate Ready Leicester branding being rolled out across the council and with partners



Current delivery examples

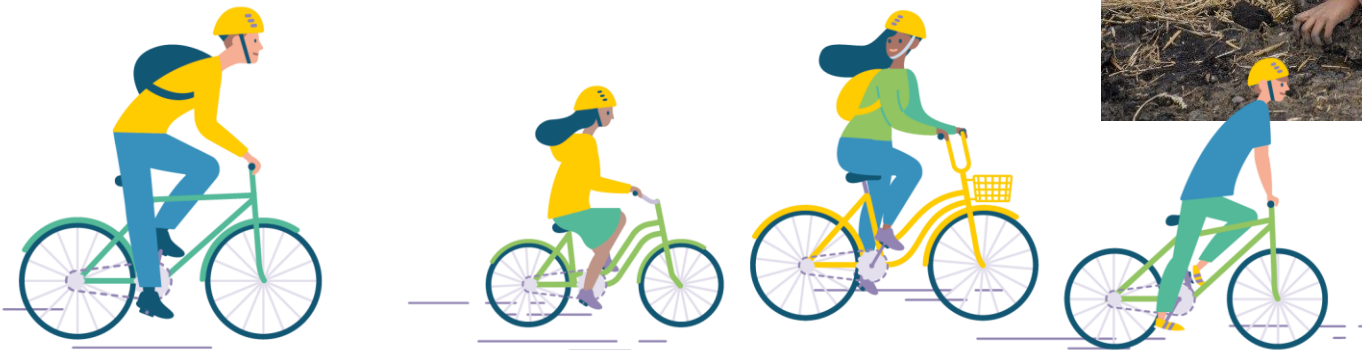
- Private housing – Addressing fuel poverty, Warm Homes Local £4.5m programme from September 2025
- Council housing – loft insulation, upgraded heating systems
- Energy efficient, low carbon new housing e.g. Stocking Farm
- Council buildings – Clean& Green Invest to save programme £2 million approved, LEDs and PVs
- Business support – new low carbon business units open at Pioneer Park and Dock 3-4



CLIMATE
READY→
LEICESTER

Current delivery examples continued

- Sustainable schools - Eco Schools, Built Environment Service (BESS), 'Tiny Forests', Wildlife Friendly Schools, SuDs in Schools
- Environment Gallery at New Walk Museum
- Greening of Festivals and events
- Green Libraries Project
- plus all the transport, flood management and other projects outlined on the other slides.



Environment

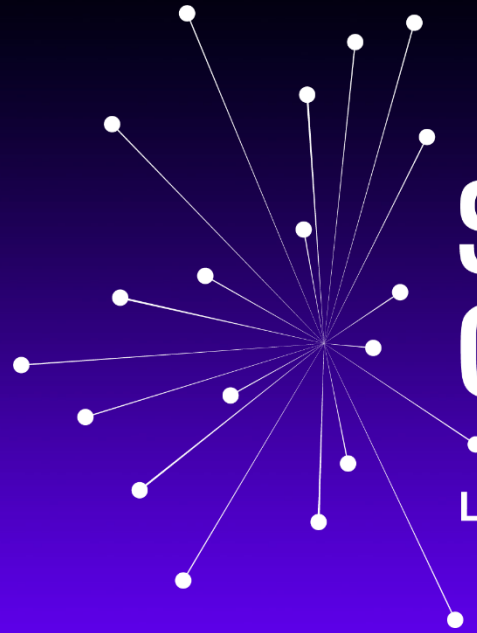
- Flood risk – Lead: Martin Fletcher
- Air Quality Action Plan - Lead: Daniel Pearman
- Biodiversity Action Plan – Lead: Grant Butterworth
- Climate Ready Leicester Plan – Lead: Jo Allen



Place Marketing and Inward Investment

Lead: Mike Denby

- Encouraging inward investment and existing company growth
- Promoting the city as a 'destination' to live, work and play
- Attracting residential investment and assisting asset disposal
- Promoting and attracting investment to Space City and other key sites such as Canopy/ Dock etc
- Engaging the property and investment industry, commercial agents, investors, developers
- Creating an ambassador scheme for stakeholders who want to support our work



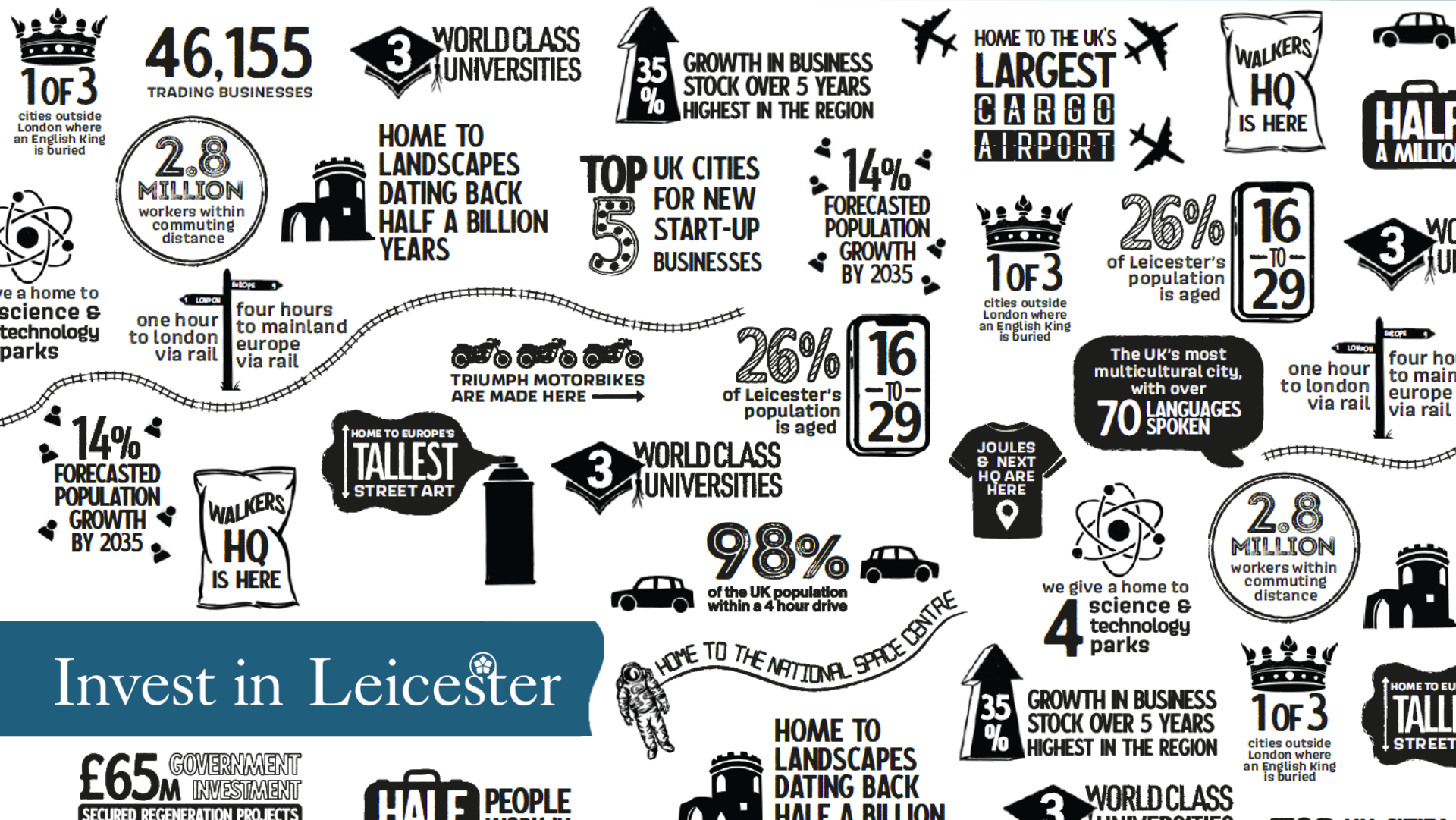
SPACE
CITY

LEICESTER



Leicester

investinleicester.co.uk



Invest in Leicester

City Centre Lead: Sarah Harrison

- Lead for Leicester Tourism Action Plan and Tourism Ambassador schemes
- Liaising with city centre businesses and organisations on behalf of the council
- Developing joint initiatives (e.g. with BID) that improve the city centre offer
- Supporting night time economy venues, and accommodation and retail sectors
- Advising on market trends (e.g. changing shape of retail) and monitoring data to assess strength of economy
- Producing a monthly report of activity and news for wide group of stakeholders

Economic Regeneration

Lead: Peter Chandler

- Workspaces/Market
- Jobs and Skills
- Business Support
- Regeneration programme management



Dock 3-5

C A N O P Y



Jobs and Skills/ Business Support

- Get Britain Working – labour market strategy
- Connect to Work – subregional employment support programme
- Employment Hub – works with employers to recruit disadvantaged groups
- Graduate Retention – focus on internships with SMEs to encourage people to stay
- Business support projects
- Sector training facilities - Construction Hub/ Fashion Hub

Apprenticeship Graduation Ceremony



Regeneration Programmes

- £13.5m UK Shared Prosperity Fund programme to March 2026 – business support/ people and skills/ supporting communities
- £3.0m ‘Skills Bootcamps’ programme for city and county to March 2026 – sector skills funded by DfE.
- £17.2m Connect to Work employment support programme to 2030

Business Skills Partnership

Lead Phoebe Dawson

- Subregional partnerships
- Business and Stakeholder Engagement
- Economic Strategy/ Local Growth Plan
- Business Support via the Growth Hub
- Embedding enterprise in schools/ careers advice
- Innovation Strategy

Adult Education

Lead: Kerry Gray

- English, Maths & ESOL
- Digital Inclusion
- Careers Advice, employability and skills for work
- Health & wellbeing: Arts, culture & community
- Family Learning
- Access to Higher Education